



Enterprise Reporting Solution

## Argos 6.8.1 Release Guide

*Product version 6.8.1*

*Last updated 6/16/2022*

# Trademark, Publishing Statement, and Copyright Notice

---

© 1998-2022 Evisions. All rights reserved.

This software and related documentation are provided under a license agreement containing restrictions on use and disclosure and are protected by intellectual property laws. No part of this document may be reproduced, stored in or introduced into a retrieval system, or transmitted in any form or by any means (electronic, mechanical, photocopying, recording, or otherwise), or for any purpose, without the express written permission of Evisions.

The information contained herein is subject to change without notice and is not warranted to be error-free. Product features referenced herein for a period of time may not match product contents. Evisions does not warrant that the functions contained in the software will meet your requirements or that the operation of the software will be uninterrupted or error free. Evisions reserves the right to make changes and/or improvements in the software without notice at any time.

This software and documentation may provide access to or information on content, products, and services from third parties. Evisions and its affiliates are not responsible for and expressly disclaim all warranties of any kind with respect to third-party content, products, and services. Evisions and its affiliates will not be responsible for any loss, costs, or damages incurred due to your access to or use of third-party content, products, or services. Evisions does not endorse the content or developer of any products or web sites mentioned.

All information in this guide is designed for instructional purposes only. Evisions makes no guarantees regarding the accuracy or performance of any techniques used in this guide. Software configurations and environments may vary, and some techniques used in this guide may not operate efficiently under all configurations. This guide may contain examples of various technologies or products, which are the sole property and responsibility of their creators.

Trademarks are the property of the respective owners for any products mentioned herein.

# Table of Contents

---

- What's New in Argos 6.8.1?** ..... 4
  - Important Information Regarding This Update ..... 4
    - SAML Assertion ..... 4
    - MAPRAPI ..... 4
  - MAPS and Argos Updates ..... 4
    - Product versions ..... 4
  - Installation ..... 5
    - 1. Prepare test environment and ensure current backup ..... 5
    - 2. Check for updates ..... 5
    - 3. Allow update process to complete ..... 5
    - 4. Verify the latest version is installed ..... 5
- Argos 6.8.1 Release Notes** ..... 6
- Getting Help** ..... 9
  - Can't find what you're looking for? ..... 9

# What's New in Argos 6.8.1?

---

Evisions is pleased to announce the release of Argos version 6.8.1, which includes the following changes:

## Argos Enhancements:

- Added dashboard tab customizations.
- Added a character limit to edit boxes and memos.
- Additional improvements to accessibility and usability.

## Argos Resolved Issues:

- Multi-column list box filters in the Web Viewer were failing to recognize fields that had a value of zero.
- Additional resolved issues.

## MAPS Enhancements:

- SAML servers may now synchronize security, permissions, and other resources by way of a matching NameID and local MAPS user name.
- Added additional API support for MAPRAPI.

## MAPS Resolved Issues:

- Updates to the REST Connector.
- Various resolved issues.

We appreciate the feedback received from all of our users. Our products would not be what they are today without your continued support. If you have any comments or suggestions, please do not hesitate to [open a HelpDesk ticket](#) and let us know.

## Important Information Regarding This Update

---

### SAML Assertion

Prior to 6.8.1, instances where NameID was missing from the SAML Assertion resulted in users being granted access as "User". NameID will now be required in the SAML Assertion after upgrading to 6.8.1. Speak with your MAPS Administrator if you receive any access errors after upgrading.

### MAPRAPI

If you have API Security enabled (previously know as API HTTP Referrer checking), all of your MAPRAPI calls will fail until you create an API token, and add your token to all MAPRAPI calls.

## MAPS and Argos Updates

---

Some of the changes in this release require an update to MAPS as well as to Argos. We recommend upgrading both products to the latest versions concurrently.

### Product versions

The latest versions of MAPS and Argos included in this release are:

- Argos mapplet 6.8.1.2058 / Argos client 6.8.1.2429 / Web Viewer 6.8.1.21
- MAPS service 6.8.1.2540 / MAPS Config 6.8.1.1407 / eLauncher 6.8.1.7 / Evisions Application Launcher 1.1.6.32

## Installation

---

### 1. Prepare test environment and ensure current backup

We highly recommend installing updates in a test environment before applying them to your production environment. You should make sure that a current backup is available in case of any unforeseen issues. To create a full backup of your MAPS environment, go to the **Server -> Backups** screen in MAPS and click **Backup Now**.

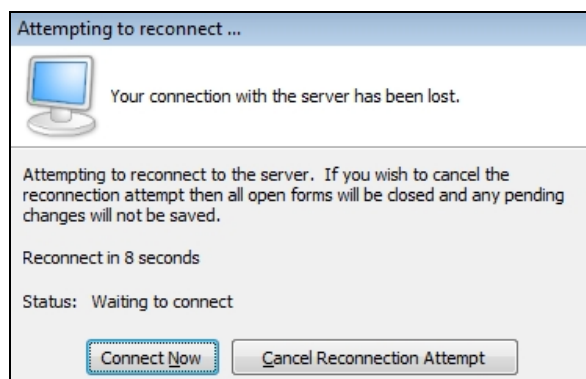
### 2. Check for updates

Click the **Check for Updates** button in the MAPS Config application to view available updates.

It is possible to apply updates when users are on the system; however, to avoid the possibility of losing unsaved work we recommend applying updates during off hours.

### 3. Allow update process to complete

When applying updates to the MAPS service you will be temporarily disconnected from the server:



The update process may take a few minutes to complete. **Do NOT cancel the reconnection attempt or manually restart the server.** You will automatically be reconnected to the server once the update has been applied.

### 4. Verify the latest version is installed

To ensure that you are on the most current version, continue clicking the **Check for Updates** button and applying the updates until no new updates are available.

## Please Provide Us with Your Feedback!

---

As always, we welcome any [feedback or suggestions](#) you may have. We very much appreciate your thoughts and suggestions, so please keep the great ideas coming!

# Argos 6.8.1 Release Notes

Argos Mapplet 6.8.1.2058 / Argos Client 6.8.1.2429 / Web Viewer 6.8.1.21  
MAPS Service 6.8.1.2540 / MAPS Config 6.8.1.1407 / eLauncher 6.8.1.7 / EAL 1.1.6.32

## Argos

### Enhancements

Area	Description	Issue number
Accessibility	Improved tabbing via keyboard and streamlined arrow key navigation in the Web Viewer.	AR-7315
Accessibility	Improved Web Viewer keyboard and screen reader accessibility of the OLAP toolbar.	AR-7314
Accessibility	Improved Web Viewer focus behavior when making selections in the dashboard toolbar via keyboard.	AR-6287
Accessibility	Data-aware dashboard objects in the Web Viewer will now inform screen reader users when their content has changed.	AR-7184
Accessibility	Improved accessibility in the Web Viewer for search result sorting in column headers.	AR-6154
Accessibility	Improved tab order of fields on the Web Viewer login screen.	AR-5364
AWV	Improved the UI for DataBlocks that have no existing data connections in the Web Viewer.	AR-7528
AWV	CDN build versions are now included in the Help > About section of the Web Viewer.	AR-7527
Form Design	Added the Max Length field to the Properties window in Form Design in order to set a maximum character limit for edit boxes and memos.	AR-4874
Usability	Connection Pool was renamed to "Connection Group" for all hover text, titles, and data connection dialogs.	AR-7511
User Interface	Improvements to dataset UI to increase visibility.	AR-7429
User Interface	Dashboard tab size and tab color can now be customized.	AR-4456
Web Viewer	Added additional translations for chart tooltips.	AR-7332

### Resolved Issues

Area	Description	Issue number
Accessibility	Improved the contrast error message text in the Web Viewer.	AR-6806
Accessibility	When a dialog is closed in the Web Viewer, focus now returns to the control that was focused on the previous window.	AR-6283
Accessibility	Copying and pasting a folder in the Web Viewer OLAP Dimension Editor tree was producing an error on certain browsers.	AR-6307
Accessibility	Chart control buttons in the Web Viewer are now keyboard accessible.	AR-5332
Accessibility	Users were unable use a keyboard to scroll up or down in the Notes pane of a DataBlock or report in the Web Viewer.	AR-5341
Accessibility	Added alt text to DataBlock, folder, and collapsed folder ellipses icons in the Web Viewer.	AR-5124
Accessibility	Accessibility improvements for the DataBlock connection fields in the Web Viewer.	AR-5096
Accessibility	Accessibility improvements for Dashboard buttons in the Web Viewer.	AR-5048
Accessibility	Added keyboard accessibility to the Select a Connection dialog received when running a DataBlock without an assigned connection in the Web Viewer.	AR-5023
Accessibility	Default connections that were connection groups in the Web Viewer Data Connection drop-down were not accessible via keyboard.	AR-7521
AWV	Selecting the Edit button via keyboard in the Web Viewer's Dimension Editor would sometimes cause the screen	AR-7320

Area	Description	Issue number
	to misalign and the Cancel button to not respond.	
AWV	Multi-column list boxes in the Web Viewer that were filtered using the "contains" operation against a column that was using integer values were receiving an error message.	AR-7463
AWV	Changing the order of search results appended unnecessary text to the search results section headers in the Web Viewer.	AR-7285
AWV	Pressing the Back button or Escape key before a DataBlock finishes loading was resulting in a error.	AR-7456
AWV	DataBlock data connections that had a change in authorization were still being displayed as the default connection in the Web Viewer.	AR-7530
AWV	The connection group icon was missing when the default DataBlock connection in the Web Viewer was a connection group.	AR-7520
AWV	Made contrast improvements to the Web Viewer Dashboard UI.	AR-7474
AWV	When there are no connection groups available for a given data connection in the Web Viewer, attempting to select the very first connection in the list using the keyboard resulted in an error.	AR-7524
Searching	Sorting search results via the column header in the Web Viewer would sometimes require multiple attempts.	AR-6155
Usability	Schedule notes attached to a DataBlock were disappearing after being imported.	AR-6682
Web Viewer	Multi-column list box filters in the Web Viewer were failing to recognize fields that had a value of zero.	AR-7455

## Enhancements

Area	Description	Issue number
API	Added API token support for MAPRAPI.	MAPS-3219
Configuration	Updated the MAPS Database Configuration utility to support Argos Mapplet 6.8.1.	MAPS-3214
SAML	Added a new check box in MAPS Config for SAML servers allowing local MAPS/LDAP users to synchronize security, permissions, and other resources for the current session by means of matching a SAML NameID with a local MAPS username, on top of all customary accumulations made by authenticating as a Group user.	MAPS-3182

## Resolved Issues

Area	Description	Issue number
EAL	Applications launched from the Evisions Application Launcher were creating multiple connections to MAPS due to cookies being chained together.	MAPS-3146
eLauncher	Changing a password from, or canceling out of the Change Password section of the eLauncher was causing an incorrect header title to appear.	MAPS-2389
LDAP	Misconfiguration of certain LDAP user information was resulting in JSON errors in the eLauncher and Web Viewer.	MAPS-3211
REST Data Connections	REST endpoints utilizing a variable in the endpoint URL were sometimes failing to return data.	MAPS-3173
REST Data Connections	REST Connector queries containing WHERE clauses that had failed were still attempting to return data.	MAPS-2761
SAML	User names were appearing as "User" when NameID was missing from the SAML response.	MAPS-3224



# Getting Help

---

For information on using the software, please refer to the product Help, which contains detailed information on all aspects of the product.

If you are having problems with the installation or configuration, you can search our [support site](#), which includes a knowledge base of common issues. If you are unable to find the solution, submit a HelpDesk request with a detailed explanation of the problem you are experiencing.

Please do not hesitate to contact the Evisions HelpDesk if any questions or problems arise. We are here to help you and want to ensure your success.

## Can't find what you're looking for?

---

We would love to make our documentation better! If you have a moment to let us know what we missed or how we can make the help more useful, please email us at [TechDocs@evisions.com](mailto:TechDocs@evisions.com).